

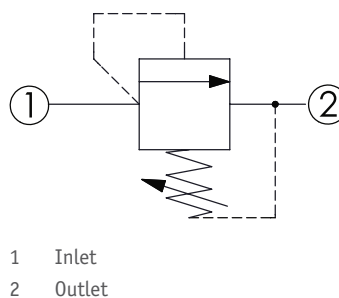
CRW-8A - Relief valve

Direct acting, pilot stage

1 Available versions

Ordering example:

CRW-8A	-20	-A	-L
Type	Operation	Pressure setting	Option



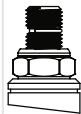
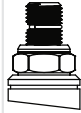
Operation

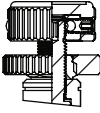
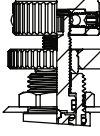
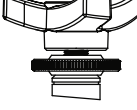
Coding	Description
20	1 to 2 (P to T)

Pressure setting

Coding	Pressure (bar)	
	Adjustment range	Standard setting
A	1.7 - 210	70
B	1.7 - 105	70
C	1.7 - 420	70
D	1.7 - 55	28
E	1.7 - 28	14
W	1.7 - 315	70

Option

Coding	Option	Drawing
L	Leakproof hex. socket screw	
LP	Leakproof hex. socket screw, with stainless steel external metal components	

Coding	Option	Drawing
K	Handknob with lock knob	
KF	Handknob with panel mount	
T	Three-winged handknob kit	

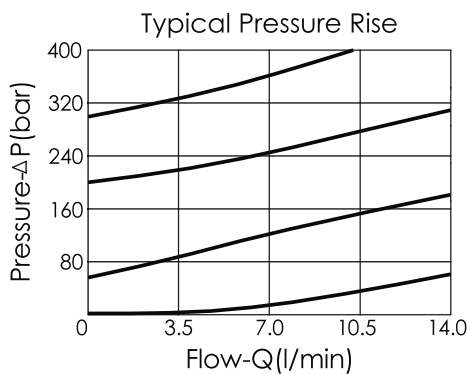
2 Technical data

Operating pressure p_{max}	350 bar
Flow rate Q_{max}	10 l/min
Installation torque	27 - 33 Nm
Cavity	T-8A
Weight	L: 0.12 kg KF: 0.14 kg

i INFORMATION

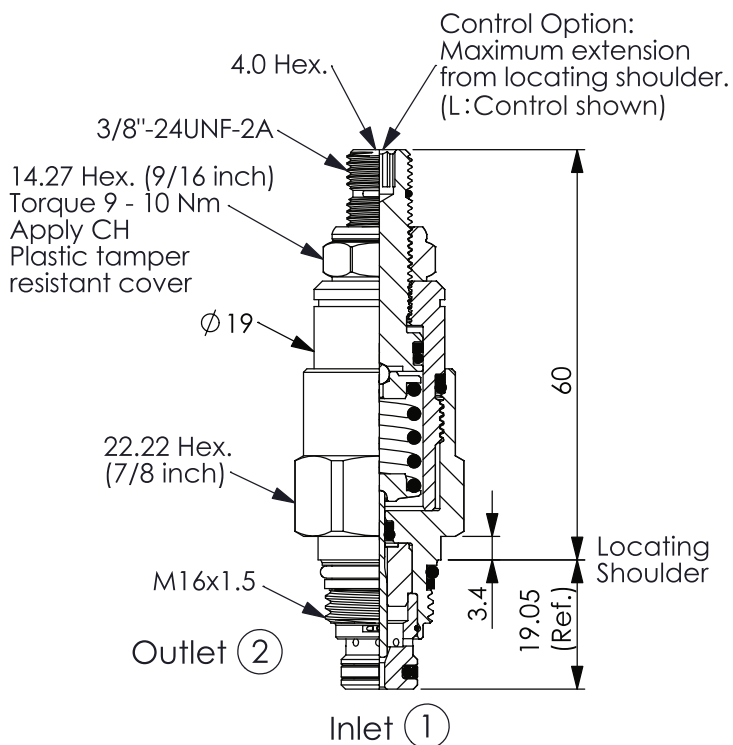
- Response time-typical (2 ms)
- Maximum leakage approximately (1 cm³/min/70 bar)

Characteristic lines



3 Dimensions

All dimensions in mm, subject to change.



4 Other information

see [Technical information HAWE cartridge valves: D 8219](#)

see [Recommendation for hydraulic fluid: D 5488/1](#)

